

MEMORANDUM

To: Mike Pivero, Road Agent
From: Mike Vignale, KVPartners, LLC
Project: Roadway Condition Evaluation
Subject: Approximate Construction Estimate
Date: November 11, 2009

SMITH CORNER ROAD

ITEM	DESCRIPTION	QUANTITY	UNIT	UNIT PRICE	TOTAL COSTS
1	Mobilization	1	LS	\$5,000.00	\$5,000
2	Site Preparation	1	LS	\$4,000.00	\$4,000
3	Excavation	100	CY	\$12.00	\$1,200
4	Reclaimed Base Course	7100	SY	\$1.60	\$11,360
5	Gravel	0	CY	\$16.00	\$0
6	Crushed Gravel	100	CY	\$22.00	\$2,200
7	Hot Bituminous Pavement Base and Surface	1,650	TON	\$70.00	\$115,500
8	Bituminous Concrete Berm	1,300	LF	\$3.50	\$4,550
9	Vegetated Swale	0	LF	\$6.50	\$0
10	Catch Basin - Drain	1	EA	\$2,000.00	\$2,000
11	6" Underdrain	0	LF	\$20.00	\$0
12	18" HDPE	40	LF	\$35.00	\$1,400
13	Pipe End Sections	3	EA	\$250.00	\$750
14	Loam and Seed	200	SY	\$2.00	\$400
15	Erosion Control (Project wide)	1	LS	\$2,500.00	\$2,500
16	Traffic Control (Project wide)	1	LS	\$2,500.00	\$2,500
	Miscellaneous (15%)	1	LS	\$13,936.00	\$13,936

TOTAL: **\$167,296**

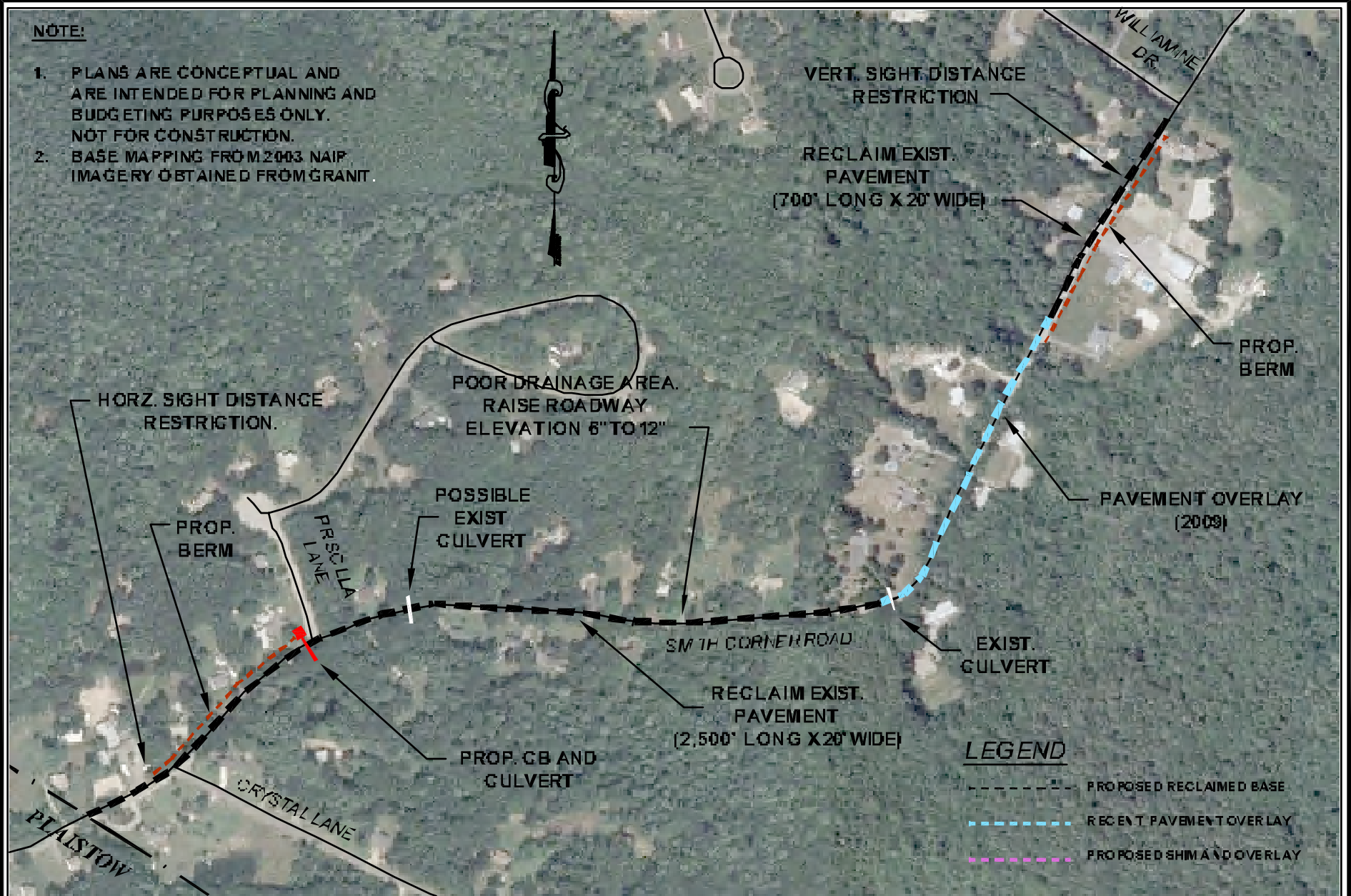
Engineering and Contingency (10%) **\$16,730**

SAY: **\$184,000**

Average Per Foot Cost **\$58**

NOTE:

1. PLANS ARE CONCEPTUAL AND ARE INTENDED FOR PLANNING AND BUDGETING PURPOSES ONLY. NOT FOR CONSTRUCTION.
2. BASE MAPPING FROM 2003 NAIP. IMAGERY OBTAINED FROM GRANIT.



KV Partners LLC

P.O. Box 898, Manchester, NH 03105

ROADWAY CONDITION EVALUATION

NEWTON, NH
NOVEMBER 2009

SMITH CORNER ROAD

Scale: 1"=400'